



DIRECTOR'S MESSAGE

Every year, the Lamar Soutter Library (LSL) staff find new ways to go above and beyond and exceed expectations. As we reflect on the past year, it is with immense pride that I present this annual report, detailing the remarkable progress and continued dedication of our library team. Despite the challenges we faced, our library has remained steadfast in its mission to support the academic, research, and clinical care missions of UMass Chan Medical School.

Our commitment to fostering a vibrant intellectual environment has been reinforced through partnerships, both within UMass Chan and beyond. Collaborative initiatives, such as our educational programs, research support services, and outreach services have strengthened our role as a hub for innovation and scholarly engagement.

I would like to take this opportunity to thank our dedicated staff, whose passion and professionalism have been the cornerstone of our success. Their resilience and adaptability have enabled us to continue delivering exceptional service, despite an ever-changing landscape. Looking ahead, we are excited to build on this momentum, by embracing new opportunities for growth and collaboration. Together, we will continue to evolve and innovate, ensuring that our library remains a cornerstone of academic excellence.



Thank you for your continued support,

Mary Piorun, PhD

Director, Lamar Soutter Library
Director, NNLM Region 7

FY2024 BY THE NUMBERS



2,111 ↑3%

INTERLIBRARY LOANS
REQUESTED BY OTHER
LIBRARIES



1,825

INTERLIBRARY LOANS
REQUESTED BY LSL
PATRONS



42 ↑31%

SYSTEMATIC REVIEW
COLLABORATIONS



16

DATA MANAGEMENT AND
SHARING PLANS REVIEWED



135 ↑13%

EDUCATION &
OUTREACH SESSIONS



126,574 ↑13%

IN-PERSON
LIBRARY VISITORS



243,633

SESSIONS ON LSL WEBSITE
& RESOURCE GUIDES



2,174

PEOPLE REACHED BY
EDUCATION & OUTREACH



2,263

REFERENCE
TRANSACTIONS



364,842

E-RESOURCE
USAGE SESSIONS

FISCAL YEAR 2024 TIMELINE

2023

FY2024 Library Collection Changes

For fiscal year 2024, the Library and UMass Chan faced a budget cut. In response to this challenge, our resource collection experienced changes.



UMass Chan Cares Campaign

Staff from the Library and Network of the National Library of Medicine's Region 7 office volunteered at the Worcester Public Library as part of the UMass Cares Campaign.

GMR Graphic Medicine Review

Graphic Medicine Review: A Second Life

After running from 2020 to 2022, the *Graphic Medicine Review* returns with a new home at the LSL, a restored mission, and provides a vibrant space for Graphic Medicine scholarship.

Pathways Liaison Program Rolls Out

As liaisons to the seven Pathways in the new Vista curriculum, the LSL librarians met virtually with first-year medical students. They discussed library resources specific to the research projects the students are conducting and performed follow-up throughout the year.



BOSTON MEDICAL Library ... invites you to the 48th annual Joseph Garland Lecture

The Framingham Heart Study at Age 75: Forever Altering the Face of Cardiovascular Care

Deeb Salem, MD
Senior VP of Academic Integration Tufts Medicine
Professor of Medicine, Tufts University School of Medicine
Chairman of Medicine Emeritus, Tufts Medical Center

in conversation with
Daniel Levy MD

The Framingham Heart Study at Age 75: Forever Altering the Face of Cardiovascular Care

The Boston Medical Library hosted its annual Garland Lecture at UMass Chan. Dr. Deeb Salem and Dr. Daniel Levy discussed their experience with the Framingham Heart Study.

JULY

Mary Piorun Serves as BLC President

Director of Library Services, Mary Piorun, served as the Boston Library Consortium (BLC) President from June 2023 to May 2024. The BLC is a strong ally and supporter of our institution, providing numerous regional resource sharing, outreach and professional opportunities.

AUG

SEP



Faculty Resource Fair

Librarians greeted new and existing UMass Chan faculty, sharing library services and resources. They focused on how the library can help faculty during the research process and show the impact of their research after it's published.

OCT



Unsolved Pathologies Coffee House

A series of presentations and conversations in medicine and science from trainees at UMass Chan. This first event's topic was: "Type 1 Diabetes: a story of patient care, evolving technology, and innovative therapeutics."

NOV



National Library of Medicine Traveling Exhibit: Pictures of Nursing

The LSL hosted this traveling exhibit November 13 through December 23, 2023. Historical nursing items were displayed on loan from [The Public Health Museum in Massachusetts](#), and the Tan Chingfen Graduate School of Nursing coordinated a Nursing History Panel Discussion.

DEC

FISCAL YEAR 2024 TIMELINE

2024

NNLM DISCOVERY

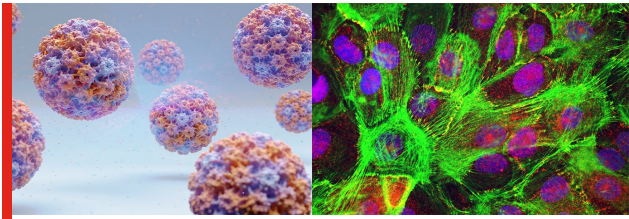
NIH National Library of Medicine
Network of the National Library of Medicine

NNLM Discovery Podcast: Outbreak!

What do Zombies and a Victorian-era museum featuring restraints as mental health tools have to do with public health education? [Listen to this episode of the NNLM Discovery Podcast](#), featuring Region 7's associate director, Jessica Kilham!

JAN

FEB



LSL Artist-in-Residence Presents: Science Illuminated: An Artistic Exploration

Featuring works from UMass Chan's Biochemistry & Molecular Biotechnology departments, the striking artwork was inspired by the hidden world of molecules and cells, crafted by some of our brilliant researchers. [View the art here.](#)



The 20th Annual Gerald F. Berlin Prize for Creative Writing

Held in a hybrid format, this year's winners read their pieces and we heard from a few past recipients of the award. [Watch the recording.](#)

MAR



Cards for Compassion & Unsolved Pathologies Coffee House

Before Unsolved Pathologies, the Gold Humanism Society hosted a workshop to make valentines for patients at UMass Memorial Hospital. After, students joined in conversation for Unsolved Pathologies Coffee House: "Mutual Health: Stress Response and How We Heal," led by Omar Taweh and Rebecca Pavchinskiy.



Family Doctors Say Goodbye

At this author talk, UMass Chan faculty member Lucy Candib, MD and co-author Will Miller, MD, MA discussed *Family Doctors Say Goodbye*. They engaged attendees in a robust discussion on the topics of career and life transitions.



Journal of eScience Librarianship (JeSLIB) Special Issue:

Responsible AI in Libraries and Archives

APRIL



UMass Chan Wellness Fair

LSL librarians and NNLM R7 staff shared services and resources with members of the UMass Chan community, with a focus on personal health and wellness.



Environmental Justice at UMass Chan

The Office of Sustainability, Diversity and Inclusion Office, and the Lamar Soutter Library at UMass Chan are collaborating to create an environmental justice program. This initiative began in April with an [environmental justice webinar](#) and [environmental justice library resource guide](#).

FISCAL YEAR 2024 TIMELINE

Limbic Capitalism and Mass Addiction Before and After the Digital Revolution

David T. Courtwright, Ph.D.
 Presidential Professor Emeritus
 University of North Florida
 Author of *Forces of Habit* and *The Age of Addiction*
 Recipient of the NEH Public Scholar Fellowship



Boston Medical Library Estes Lecture

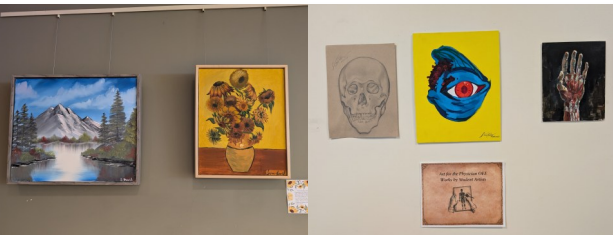
At the 21st Annual J. Worth Estes Lecture, David T. Courtwright, Ph.D. gave a lecture on *Limbic Capitalism and Mass Addiction Before and After the Digital Revolution*. [Watch the recording.](#)

MAY



WDMS Author Talk: Sunita Puri, MD

Dr. Sunita Puri, Program Director of the Hospice and Palliative Medicine Fellowship at UMass Chan and associate professor of clinical medicine, discussed her critically acclaimed literary memoir *The Good Night: Life and Medicine in the Eleventh Hour*.



Artist-in-Residence Presents: Student Art Showcase

The Student Art Showcase combines pieces created by medical students enrolled in the Art for the Physician Optional Enrollment Elective (OEE) and pieces created by GSBS student Serena David.

JUNE

UMass Chan Office of Graduate Medical Education Resource Fair

LSL Librarians met with incoming residents and fellows, introducing them to Library resources and services. In addition to the GME Fair, the clinical liaisons presented library orientations to new residents throughout the summer.

FY2024 & FY2025 INTEGRATED LIBRARY SYSTEM MIGRATION

Fall 2023

The LSL launched a team to investigate migrating from the previous catalog and resource management systems to a singular, more versatile and robust integrated library system (ILS).

Motivations

- Increasing cost of the previous product
- A need to merge our print and electronic resource management systems
- A gap in needed & desired statistical tools

Winter of 2024

The designated team carefully selected Clarivate Ex Libris's Alma & Primo VE products. An ambitious goal was set to migrate to the new platforms by 2025.

Project Status

We're happy to report that the project remains on track! We look forward to reporting more on the improvements next year. Keep an eye on our website for more information.



[VIEW FY24 LSL PUBLICATIONS](#)

[VIEW FY24 LSL GRANTS](#)

